



desert conservation  
PROGRAM  
respect, protect and enjoy our desert!

# GIS UPDATE

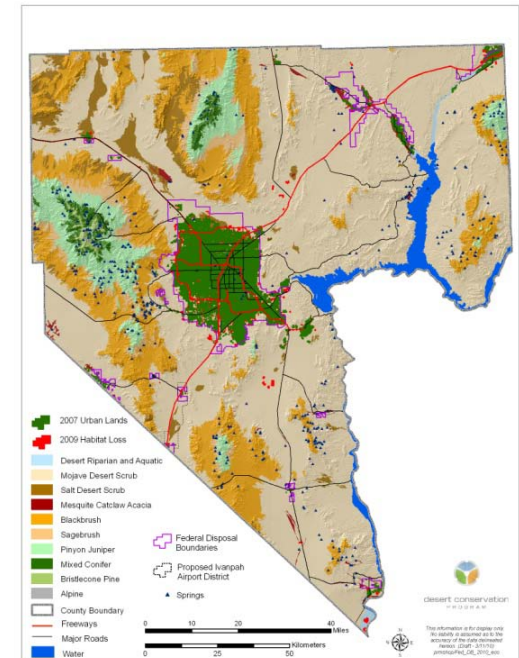
August 10, 2010

Lee Bice

Larry Mata



- Past Problems and Review of Project Data
- Status of Current GIS Data
- Current GIS Support and Applications
- Future GIS Applications
  - OpenWeb/Door Application





- Delivery of data from agencies and contractors greatly improved
  - Conforming to Data Management Plan Guidelines (Metadata/Projections/Attributes)
  - Projects now required to provide preliminary and annual data deliveries prior to final delivery
- Older datasets have gone through QA/QC and documented with metadata
- Remote Sensing data is large and difficult to organize



- GIS integration into Geodatabases continues
- Data formats and contractor expertise varies and Remote Sensing is large and still difficult to organize
- Currently DCP data size is ~ 85gb
  - ~40gb of project data
  - Remote sensing data
  - Ancillary and reference data
  - County data, permit amendment data, plots



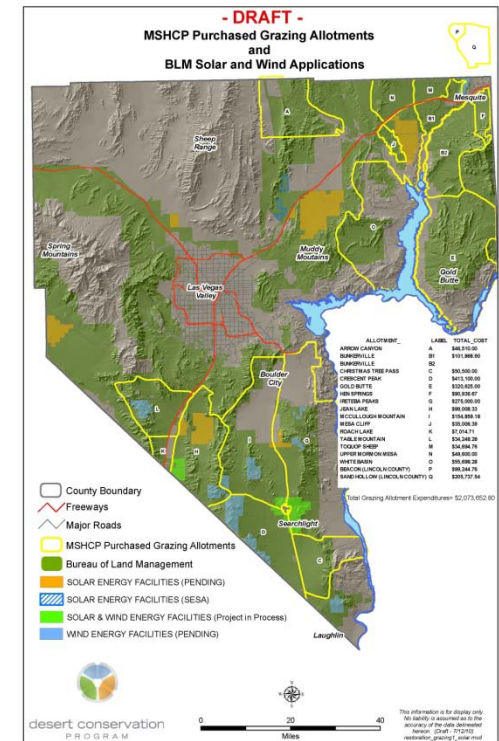


- Provide support to:
  - Ongoing DCP requirements
    - AMP products
    - Project management
  - Permit amendment
  - New project development
    - Rare Plant Survey
    - Desert Tortoise Surveys
    - Internal analysis - Boulder City Conservation Easement
    - Property acquisitions review





- QA/QC of all DCP project data
  - ~53 active projects
- Continue data exchange with public/agencies
- Review county/agency projects
  - Energy ROW/Solar-Wind
  - Land use updates






- Continual QA/QC of project data and update habitat models
- Continual data coordination with Nevada Natural Heritage Program
- Develop reserve unit custom land management tools
  - Signage, road designations, law enforcement, land exchanges, surveys, etc.
- OpenWeb/Door Application for BCCE



# desert conservation PROGRAM

respect, protect and enjoy our desert!

## OpenWeb/Door Application


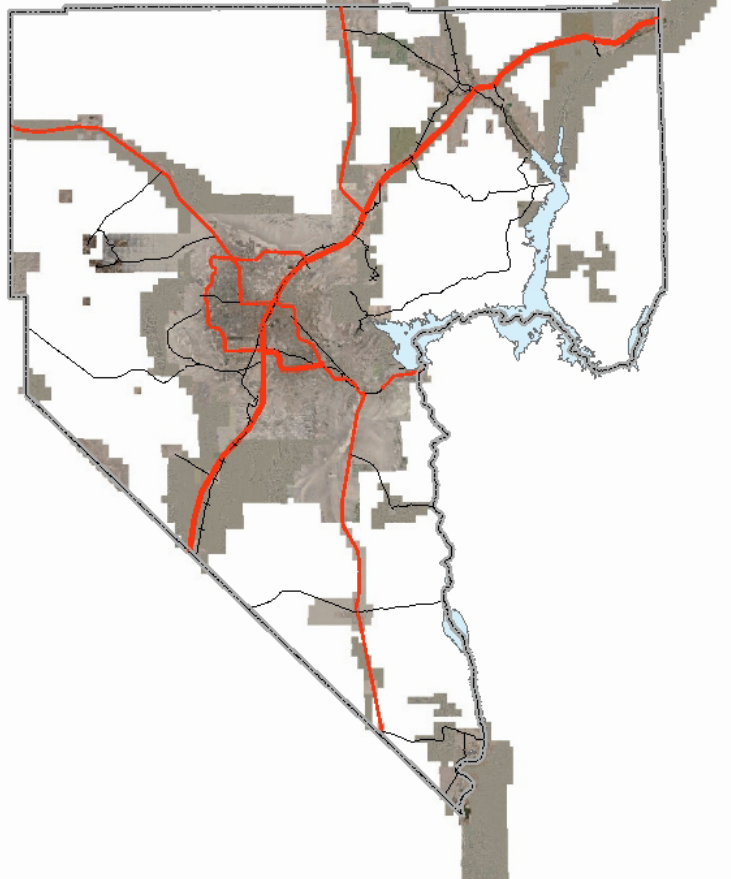


### OpenWeb

[Search](#) [Display Options](#) [Tools](#) [Points of Interest](#) [Resources](#)


**Tools**

- Search
- Select Property
- Drawing / Measure
- Export Map
- Buffer



**Information**

**Current Tool:** Pan  
**Coordinates in State Plane ft**  
**X:** 465013 **Y:** 26655294  
**Flight Date:** Most Current Flight  
**Current View:** Assessor Map







# desert conservation PROGRAM

respect, protect and enjoy our desert!

## OpenWeb/Door Application

**OpenWeb**

Search    Display Options    Tools    Points of Interest    Resources

**Tools**

- Search
- Select Property
- Drawing / Measure
- Export Map

**Select Property** Click to Close: x

[Click Here for Printable Map](#)

Property Info   Misc. Info   Elected Officials   Link Info

**Parcel:** 14026601002  
**Owner Name(s):** STUART J D ETAL  
**Site Address:** 0  
**Jurisdiction:** CC Sunrise Manor - 89110  
**Zoning Classification:**  
[Rural Estates Residential \[2 Units per Acre\] \(R-E\)](#)

**Information**

**Current Tool:** Select Property  
**Coordinates in State Plane ft**  
**X:** 821677 **Y:** 26771487  
**Flight Date:** Most Current Flight  
**Current View:** Assessor Map

1042 Feet

**GISMO**

The screenshot displays a web-based GIS application. At the top left is the 'OpenWeb' logo. A navigation bar contains buttons for 'Search', 'Display Options', 'Tools', 'Points of Interest', and 'Resources'. A 'Tools' sidebar on the left lists 'Search', 'Select Property', 'Drawing / Measure', and 'Export Map'. The main map area shows an aerial view with property boundaries overlaid in red, blue, and yellow. A pink rectangle highlights a specific parcel. A 'Select Property' popup window is open, showing details for parcel 14026601002, owned by STUART J D ETAL, with a zoning classification of Rural Estates Residential. An 'Information' box at the bottom left provides current tool and coordinate data. A scale bar for 1042 feet and the 'GISMO' logo are at the bottom right.



desert conservation  
PROGRAM  
respect, protect and enjoy our desert!

## Current GIS Support and Applications

Questions?